

PM 1 PERFORM (250 HOURS INTERVAL)

PM Checklist

● 0 ● 1 ● 2 ● 0

Inspection Number	22463373	Customer No	2969824372
Serial Number	YCP20067	Customer Name	AUSTRALIAN HAMMER SUPPLIES HIRE PTY LTD
Make	CATERPILLAR	Work Order	service@hammerhire.co m.au
Model	320	Completed On	1/05/2025 11:32:03 AM
Equipment Family	Medium Hydraulic Excavator	Inspector	Jake Raffen
Asset ID	AHSH78	PDF Generated On	1/05/2025
SMU	4714.15 Hours	Location	38 Forge St, Blacktown, New South Wales 2148, Australia
Coordinates	0, 0, 0		
Technician			

General Info & Comments

● General info/Comments

MONITOR

Comments: • Monitor not responding to touch (only able to select option menu with several attempts)
• Seat not operational (not activating the compressor)
• L/H joystick horn and attachment buttons
• Beacon rocker switch replacement
• Logged diagnostic and event codes - no active
• A/C blower fan whinning noise at low speed

Machine operatonal and will require parts for next service



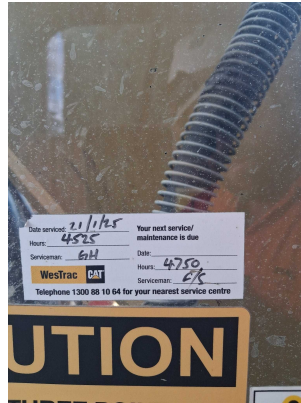


Image Comment(s):Seat not inflating/rising - 2 pin plug for compressor locking tab missing

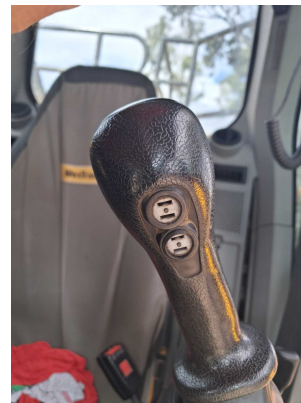


Image Comment(s):Beacon switch rocker cover **Image Comment(s):**L/h joystick **Image Comment(s):**L/h joystick



Image Comment(s):Seat not inflating/rising - 2 pin plug for compressor locking tab missing

PM 1 PERFORM (250 HOURS INTERVAL)

● 1.1 TAKE & ANALYZE SOS SAMPLE FROM ENGINE OIL NORMAL

Job : 008
Modifier :
Quantity :
WorkApp :
JobLocation :
JobCond :
CabType :
Part Number : SOS
Part Quantity : 1.0

● 1.2 PERFORM PM 1 NORMAL

Job : 540
Modifier :
Quantity :
WorkApp :
JobLocation :
JobCond :
CabType :